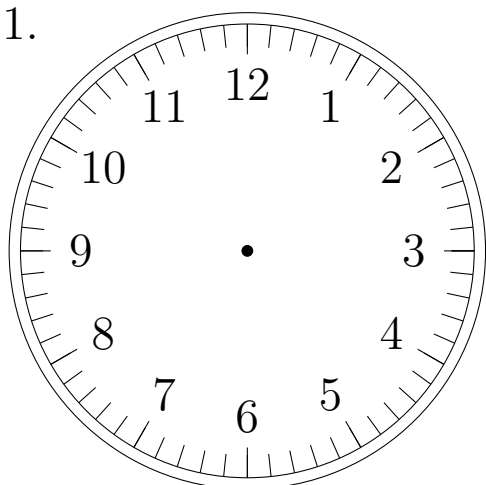


Place d'Aiguilles sur une Horloge Analogique (A)

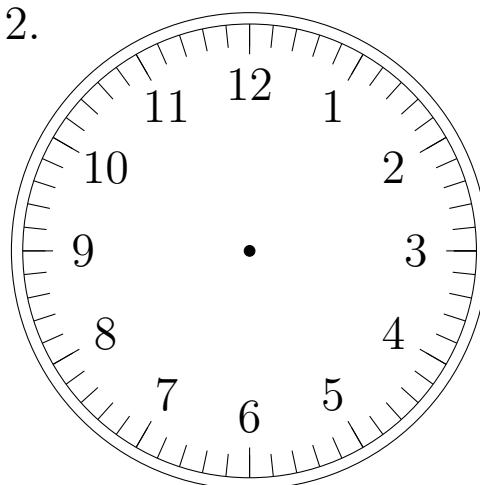
Placer les aiguilles de l'horloge pour qu'elles montrent le temps indiqué.

1.



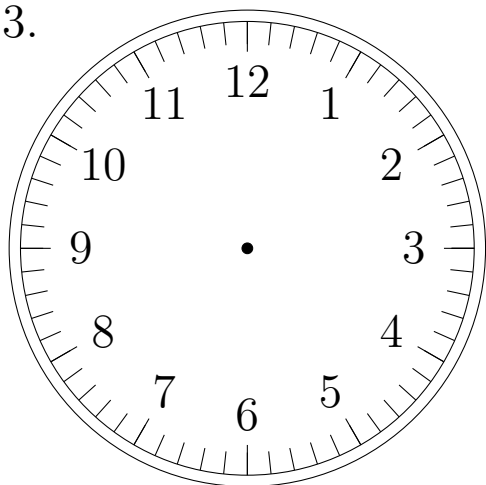
12:00:00

2.



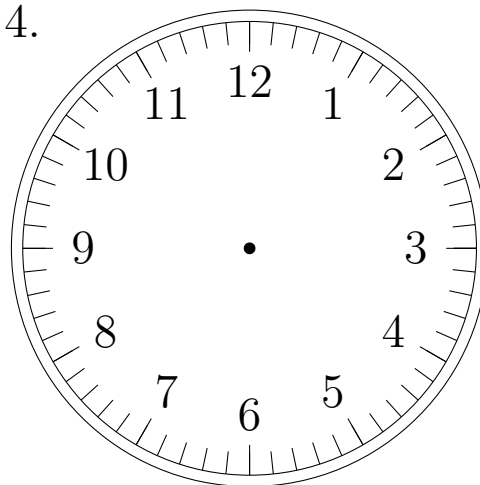
10:00:00

3.



7:00:00

4.

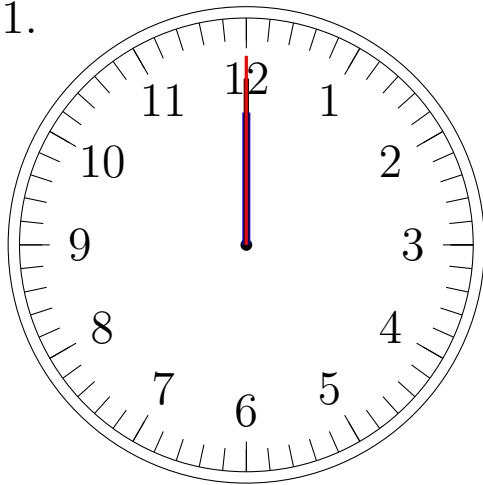


9:00:00

Place d'Aiguilles sur une Horloge Analogique (A) Solutions

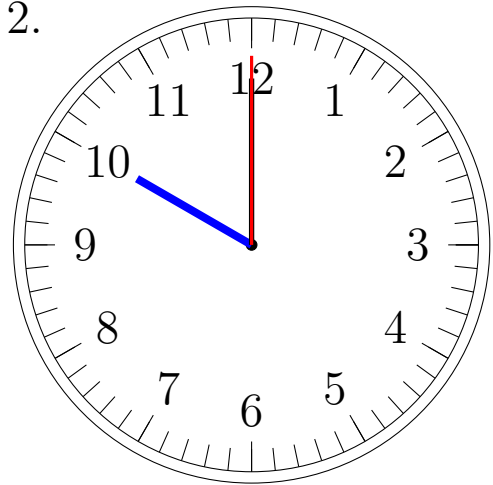
Placer les aiguilles de l'horloge pour qu'elles montrent le temps indiqué.

1.



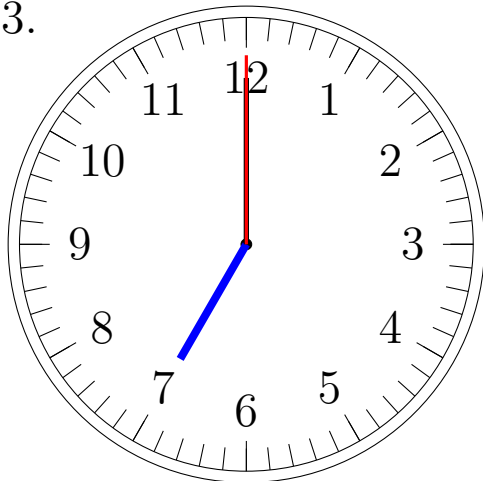
12:00:00

2.



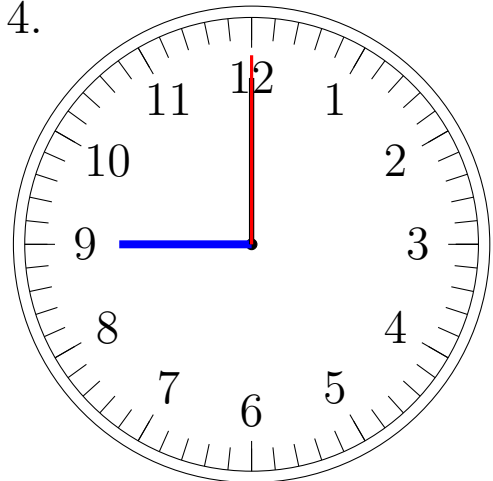
10:00:00

3.



7:00:00

4.

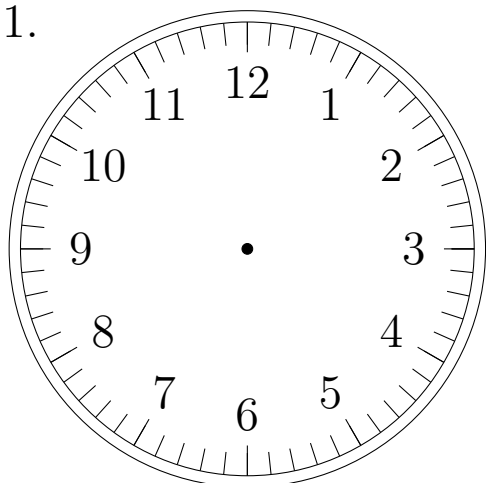


9:00:00

Place d'Aiguilles sur une Horloge Analogique (B)

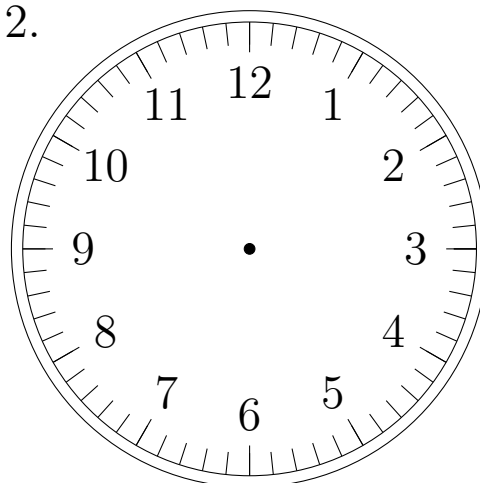
Placer les aiguilles de l'horloge pour qu'elles montrent le temps indiqué.

1.



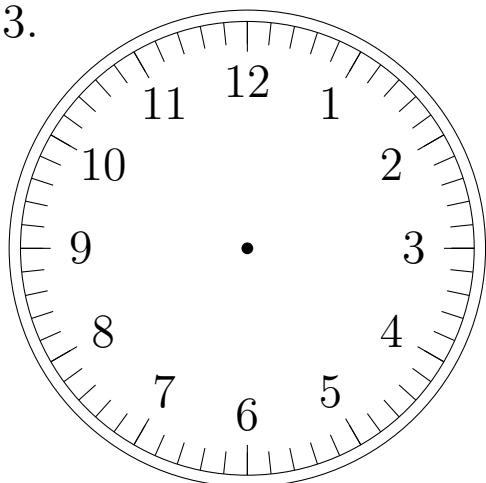
4:00:00

2.



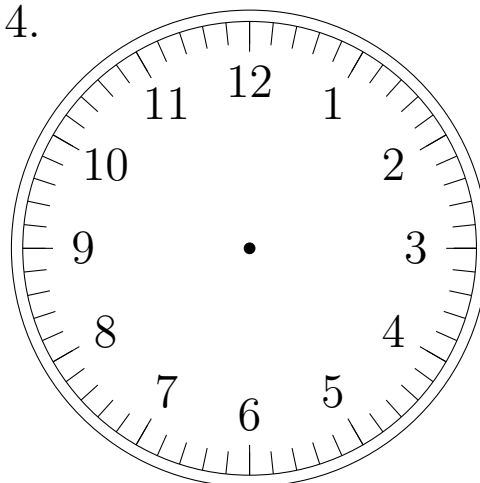
4:00:00

3.



6:00:00

4.

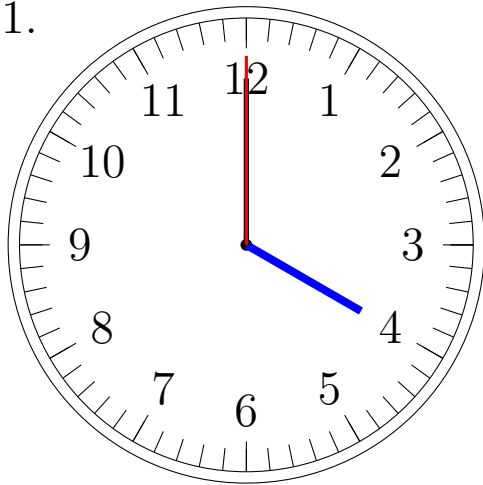


10:00:00

Place d'Aiguilles sur une Horloge Analogique (B) Solutions

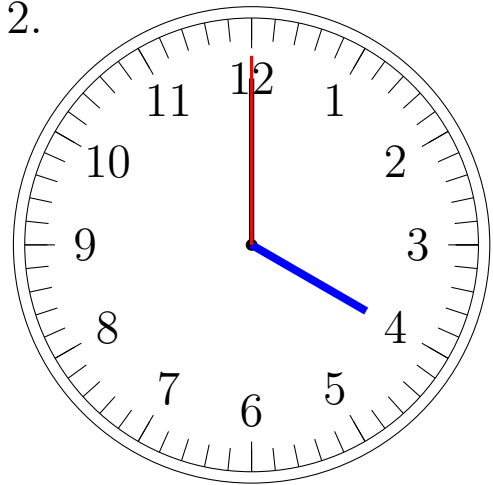
Placer les aiguilles de l'horloge pour qu'elles montrent le temps indiqué.

1.



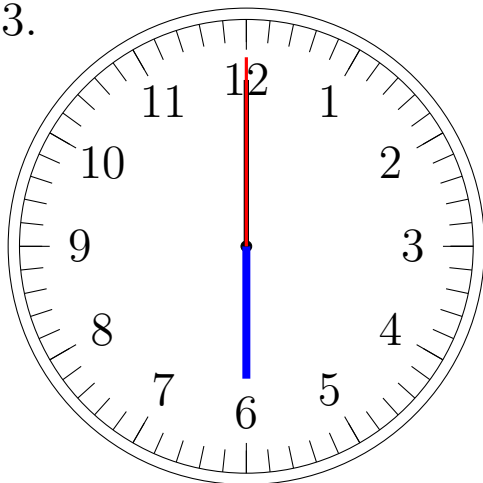
4:00:00

2.



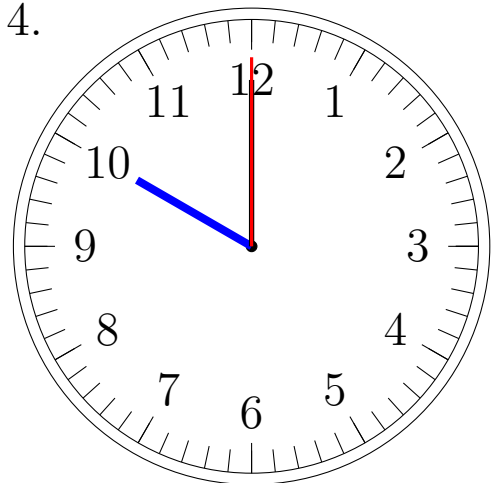
4:00:00

3.



6:00:00

4.

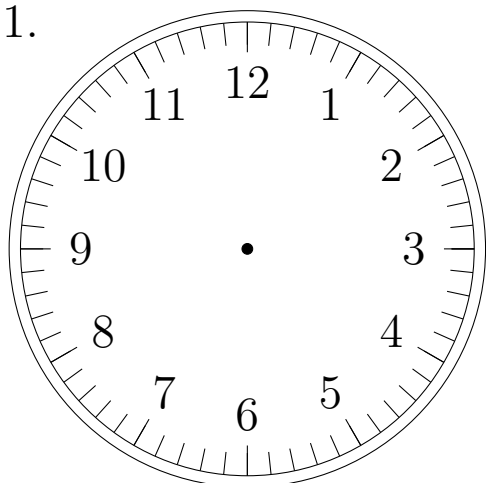


10:00:00

Place d'Aiguilles sur une Horloge Analogique (C)

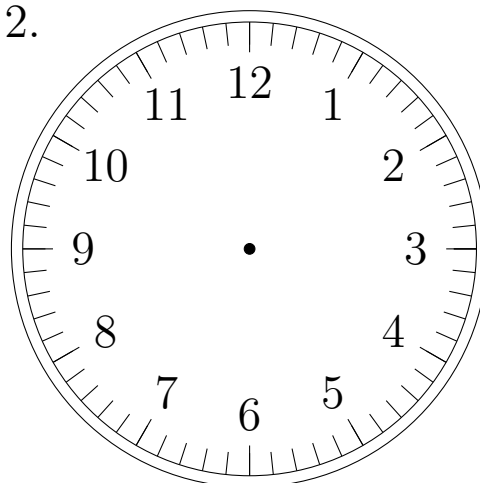
Placer les aiguilles de l'horloge pour qu'elles montrent le temps indiqué.

1.



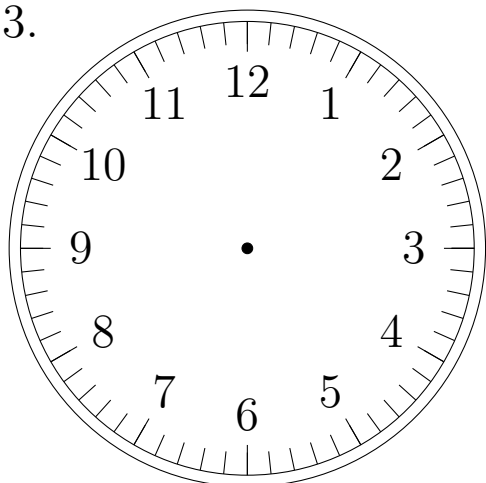
8:00:00

2.



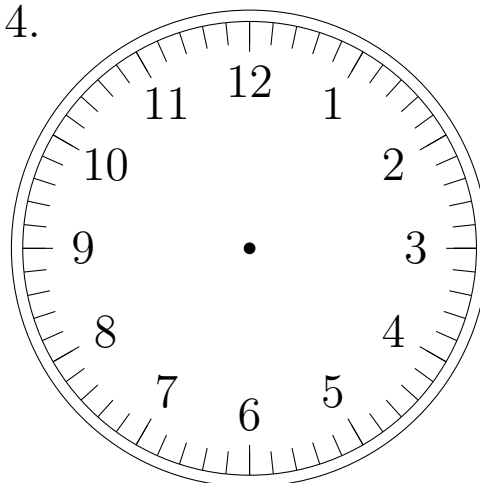
9:00:00

3.



10:00:00

4.

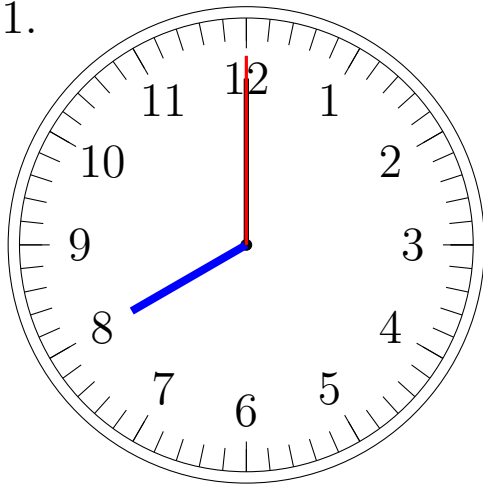


8:00:00

Place d'Aiguilles sur une Horloge Analogique (C) Solutions

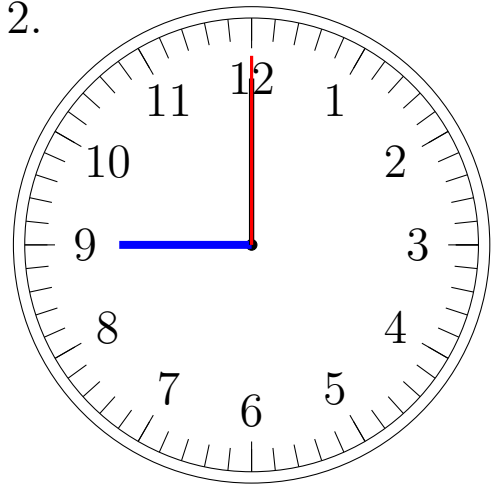
Placer les aiguilles de l'horloge pour qu'elles montrent le temps indiqué.

1.



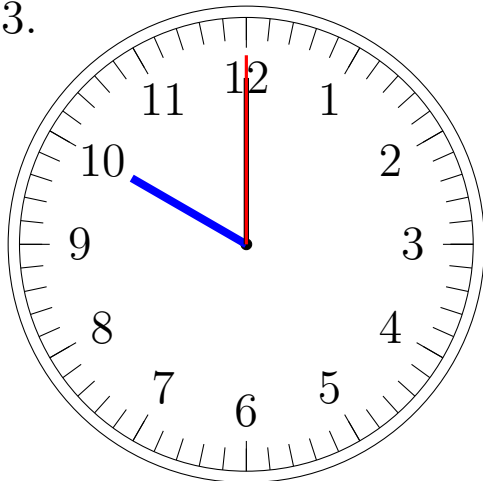
8:00:00

2.



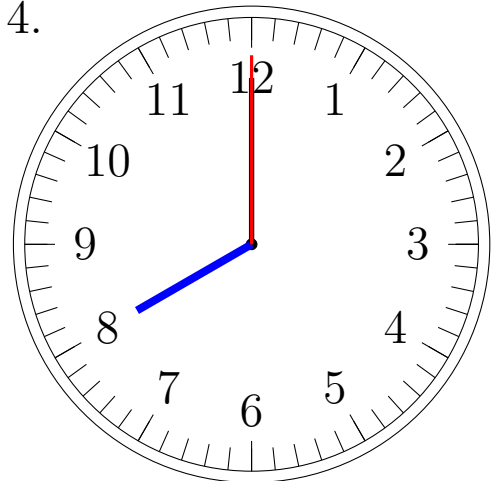
9:00:00

3.



10:00:00

4.

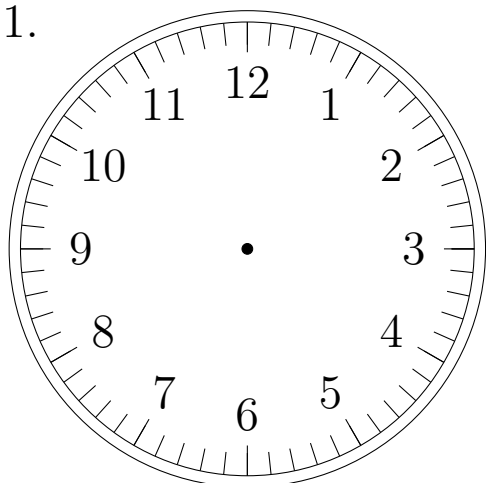


8:00:00

Place d'Aiguilles sur une Horloge Analogique (D)

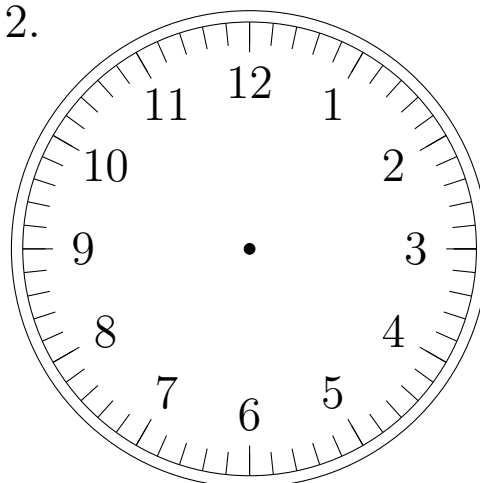
Placer les aiguilles de l'horloge pour qu'elles montrent le temps indiqué.

1.



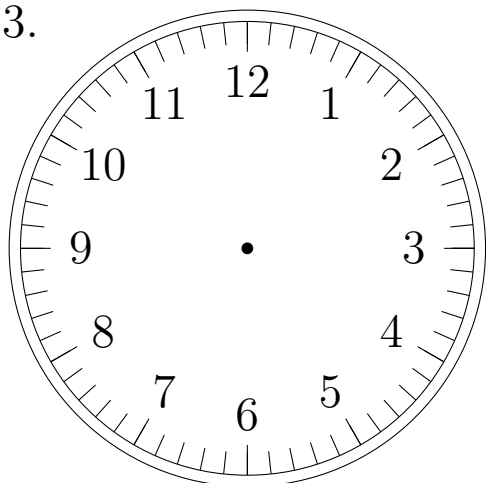
3:00:00

2.



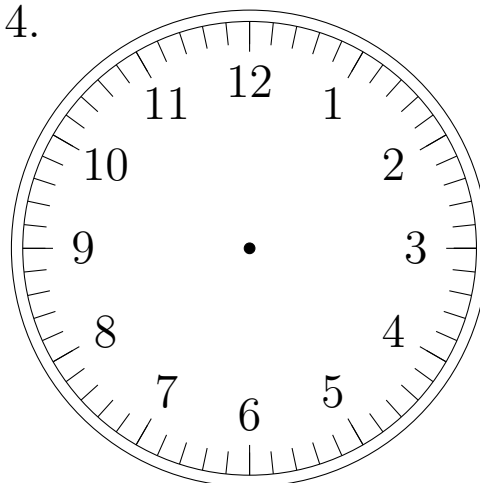
9:00:00

3.



12:00:00

4.

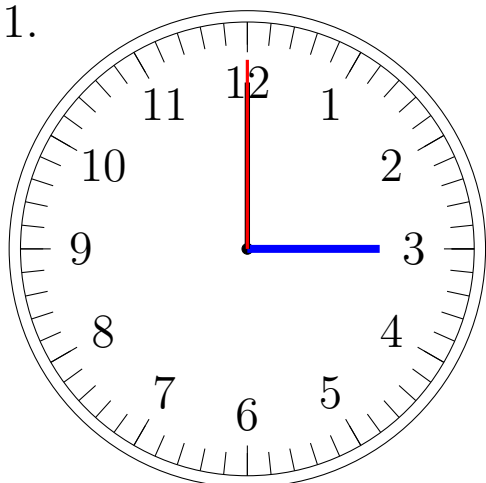


3:00:00

Place d'Aiguilles sur une Horloge Analogique (D) Solutions

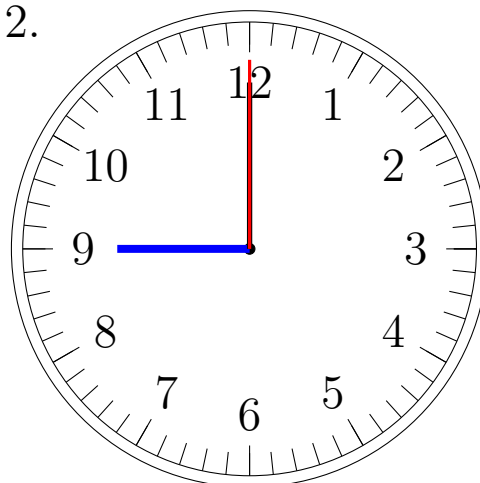
Placer les aiguilles de l'horloge pour qu'elles montrent le temps indiqué.

1.



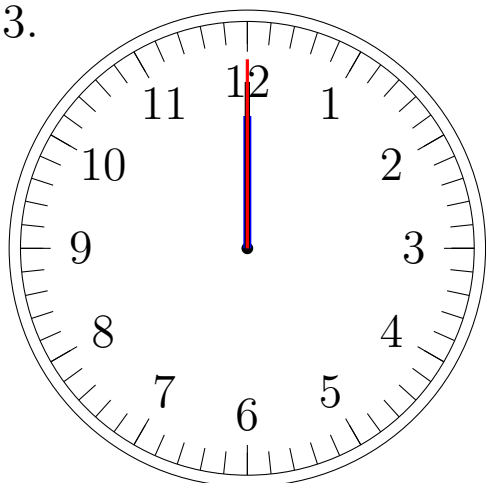
3:00:00

2.



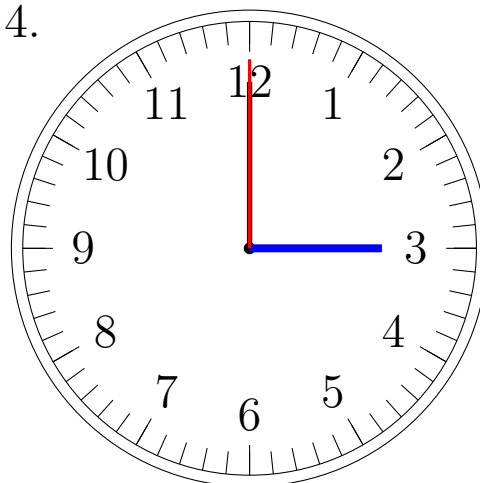
9:00:00

3.



12:00:00

4.

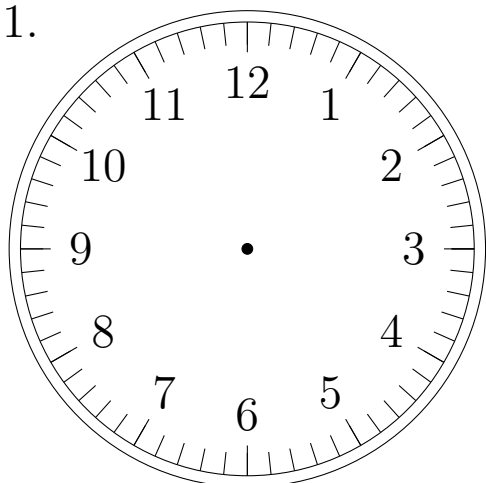


3:00:00

Place d'Aiguilles sur une Horloge Analogique (E)

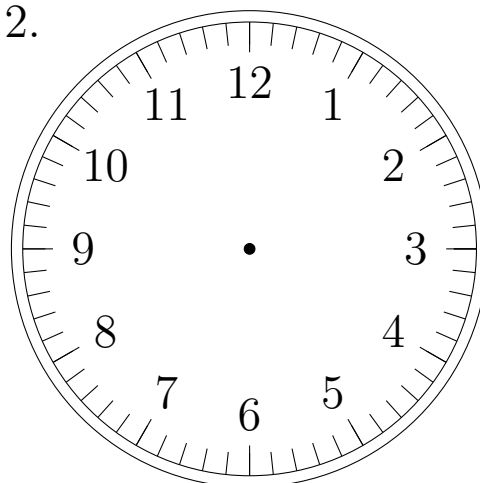
Placer les aiguilles de l'horloge pour qu'elles montrent le temps indiqué.

1.



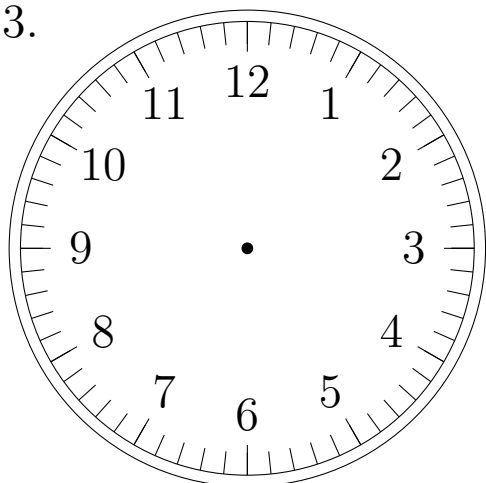
6:00:00

2.



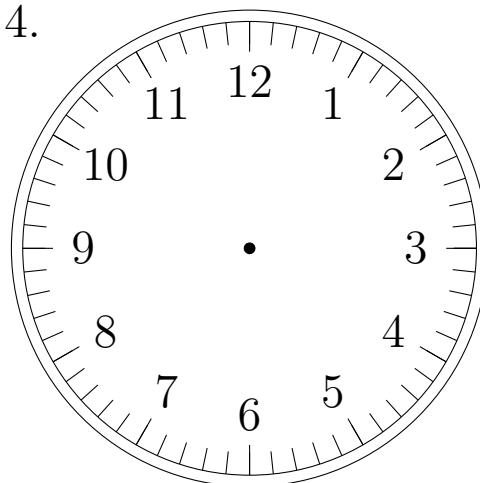
9:00:00

3.



10:00:00

4.

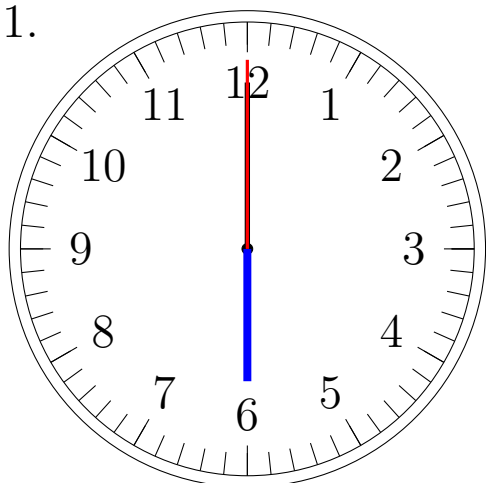


4:00:00

Place d'Aiguilles sur une Horloge Analogique (E) Solutions

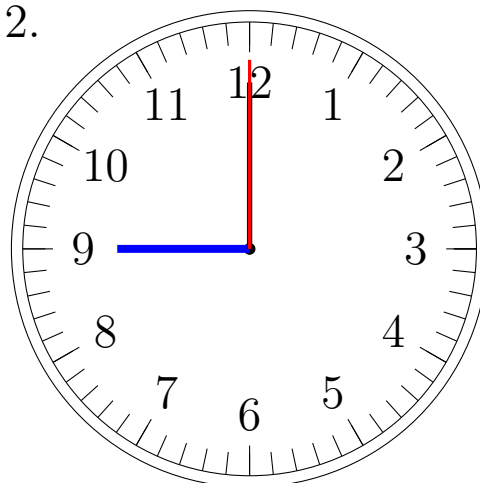
Placer les aiguilles de l'horloge pour qu'elles montrent le temps indiqué.

1.



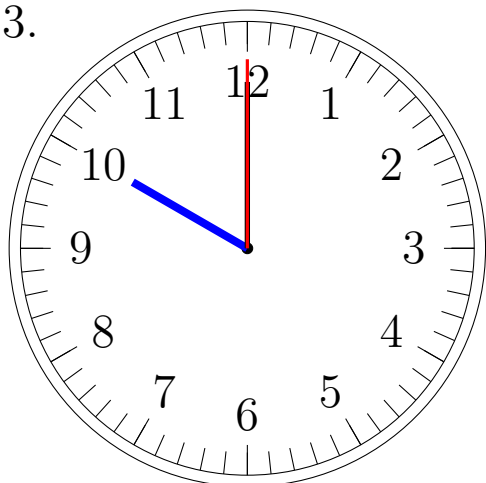
6:00:00

2.



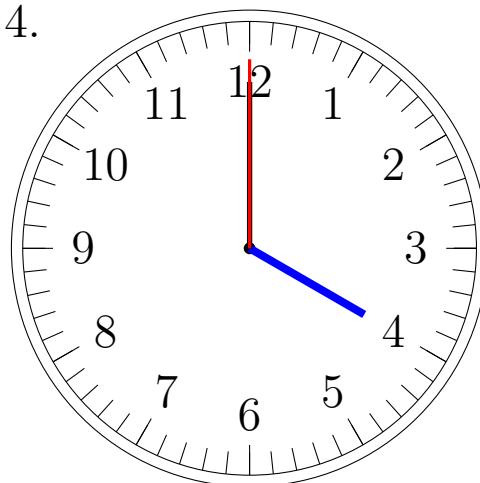
9:00:00

3.



10:00:00

4.

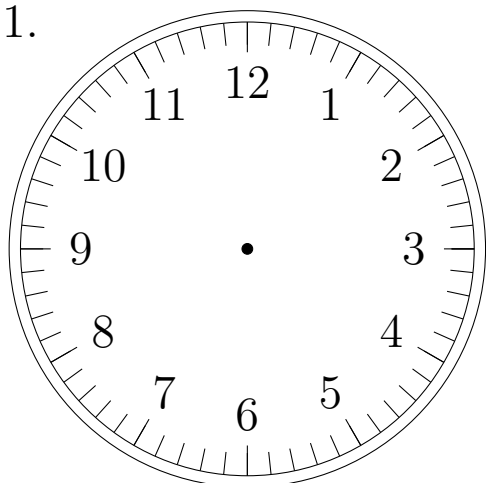


4:00:00

Place d'Aiguilles sur une Horloge Analogique (F)

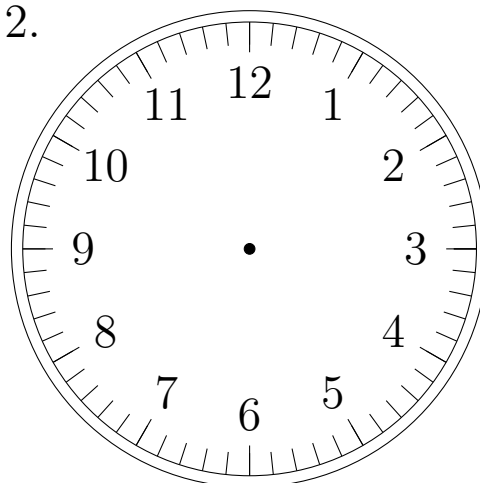
Placer les aiguilles de l'horloge pour qu'elles montrent le temps indiqué.

1.



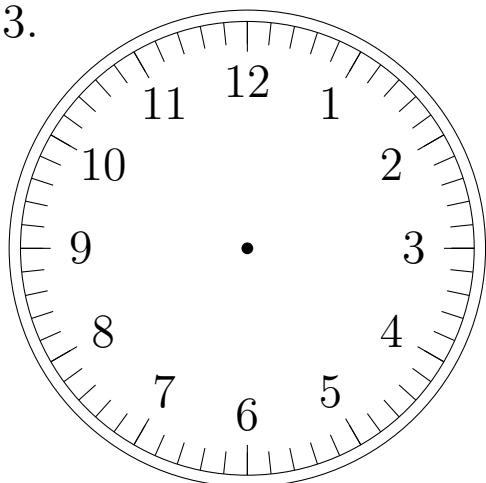
11:00:00

2.



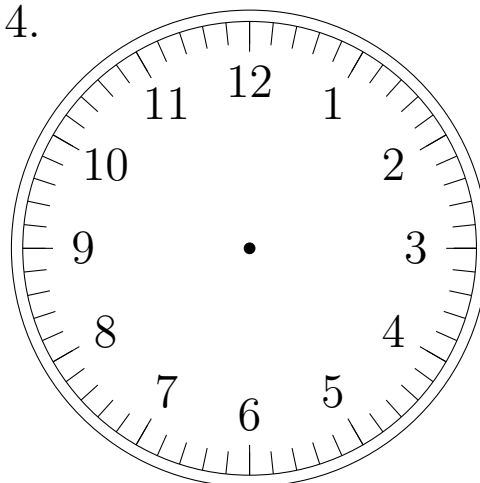
12:00:00

3.



5:00:00

4.

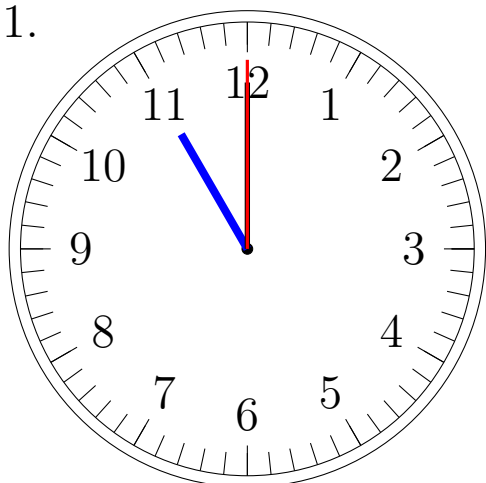


3:00:00

Place d'Aiguilles sur une Horloge Analogique (F) Solutions

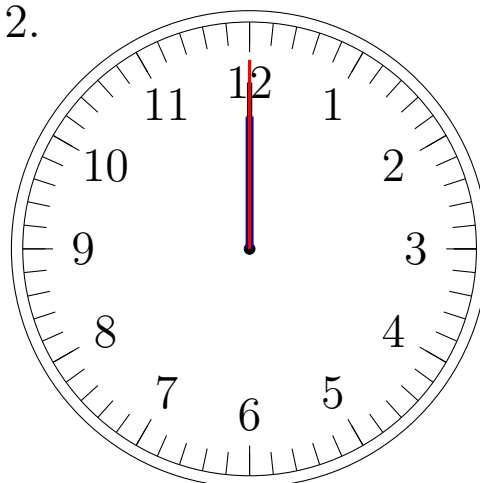
Placer les aiguilles de l'horloge pour qu'elles montrent le temps indiqué.

1.



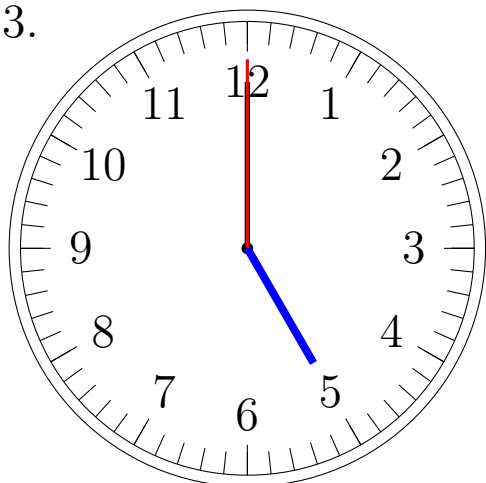
11:00:00

2.



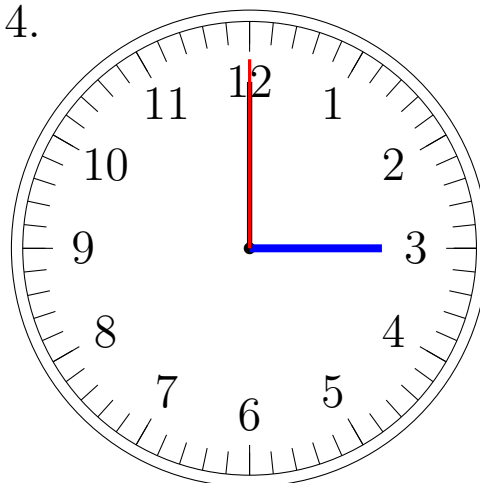
12:00:00

3.



5:00:00

4.

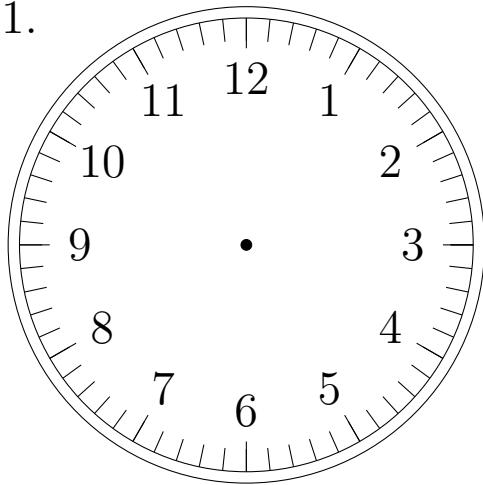


3:00:00

Place d'Aiguilles sur une Horloge Analogique (G)

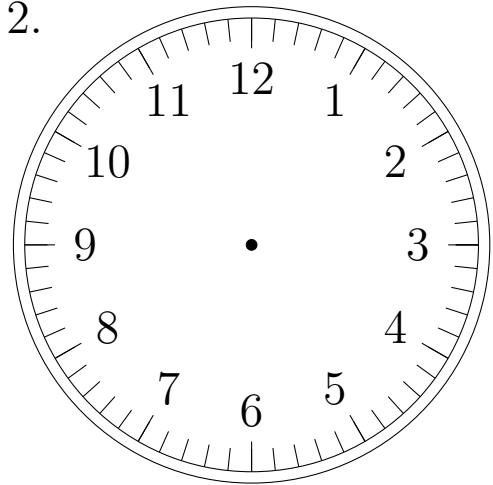
Placer les aiguilles de l'horloge pour qu'elles montrent le temps indiqué.

1.



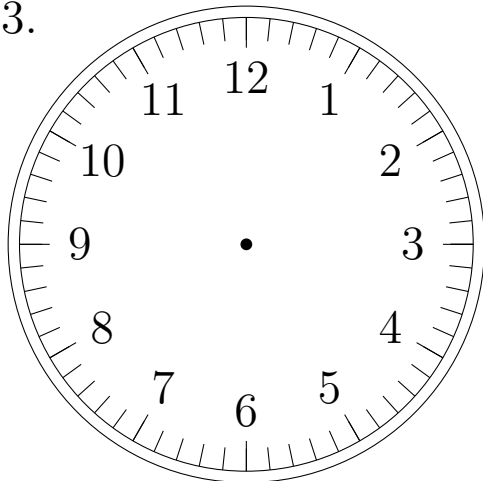
2:00:00

2.



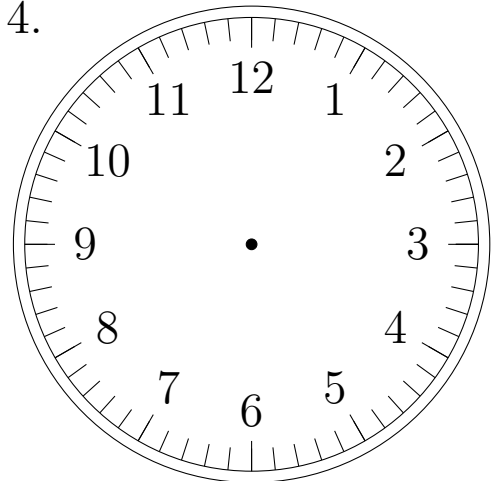
12:00:00

3.



7:00:00

4.

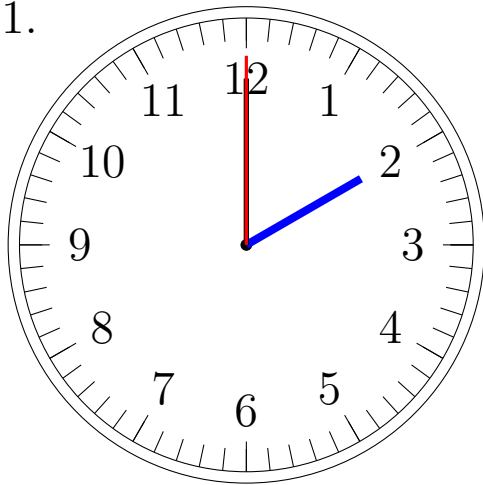


10:00:00

Place d'Aiguilles sur une Horloge Analogique (G) Solutions

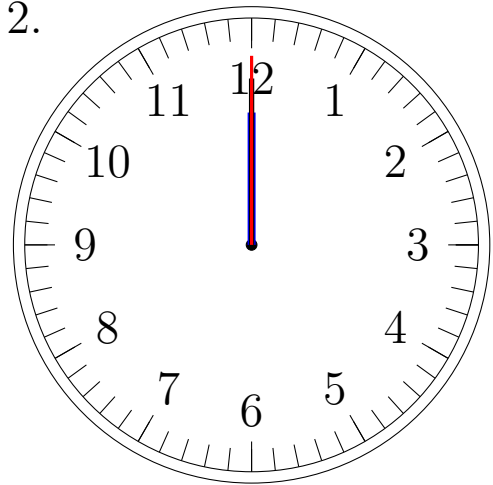
Placer les aiguilles de l'horloge pour qu'elles montrent le temps indiqué.

1.



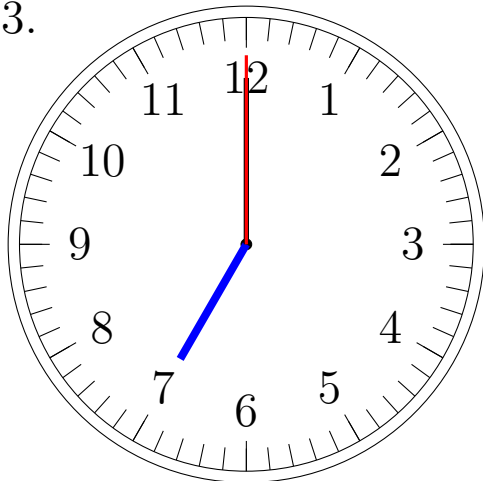
2:00:00

2.



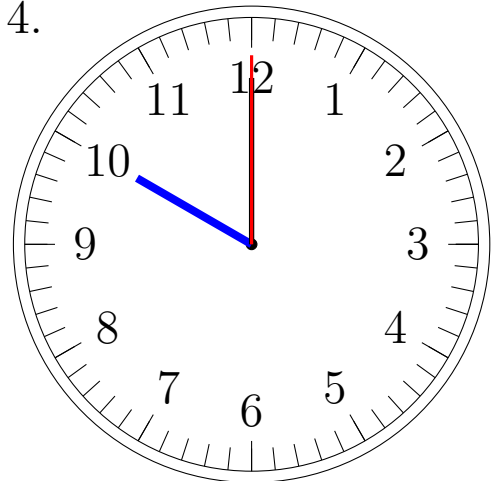
12:00:00

3.



7:00:00

4.

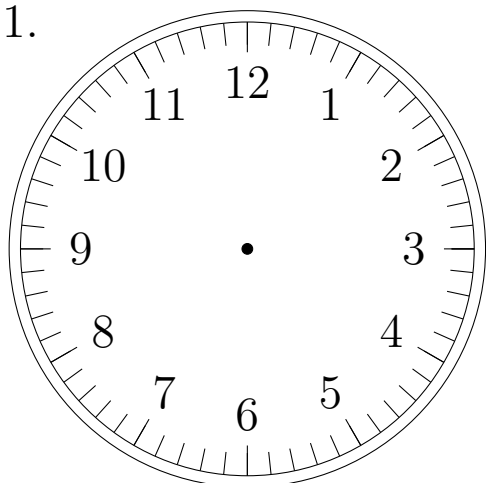


10:00:00

Place d'Aiguilles sur une Horloge Analogique (H)

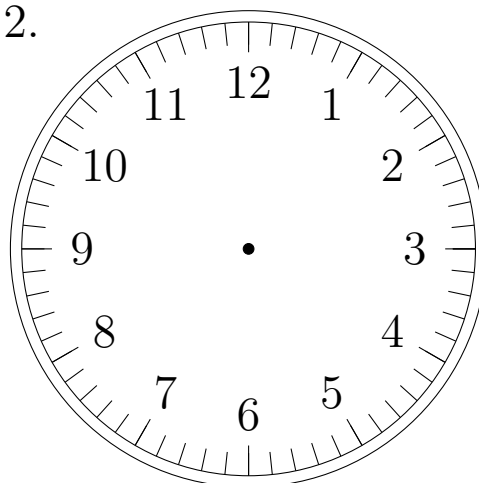
Placer les aiguilles de l'horloge pour qu'elles montrent le temps indiqué.

1.



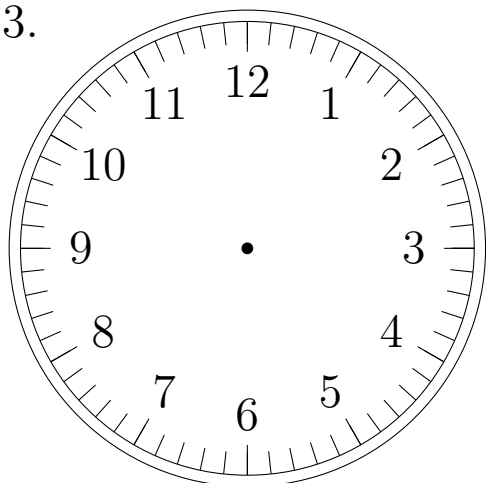
8:00:00

2.



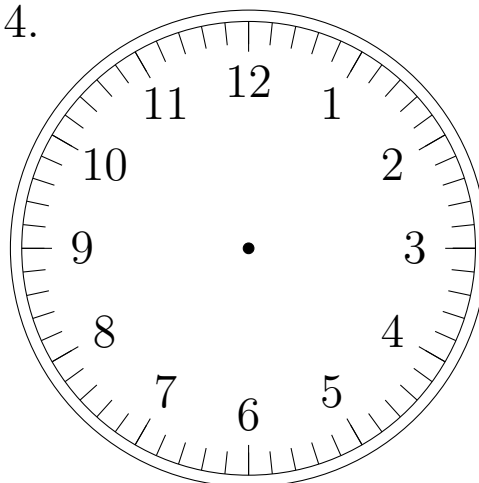
2:00:00

3.



9:00:00

4.

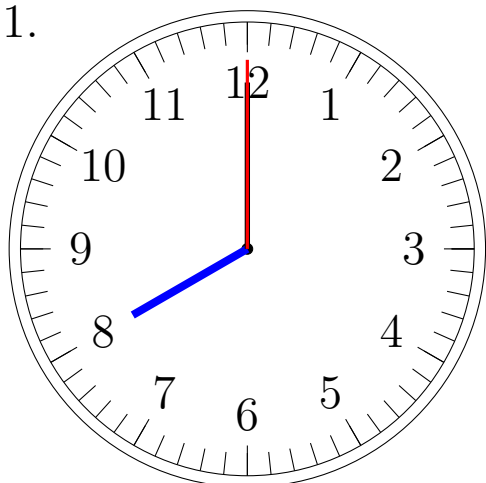


11:00:00

Place d'Aiguilles sur une Horloge Analogique (H) Solutions

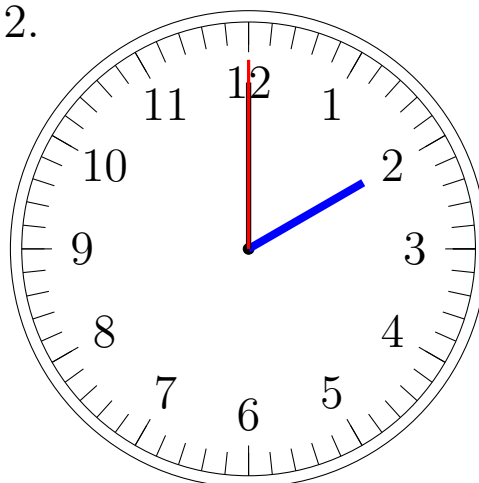
Placer les aiguilles de l'horloge pour qu'elles montrent le temps indiqué.

1.



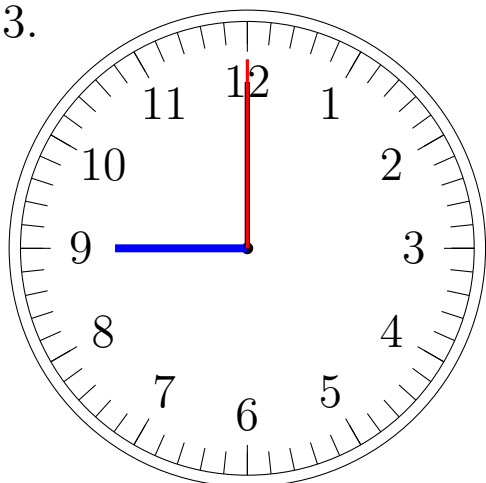
8:00:00

2.



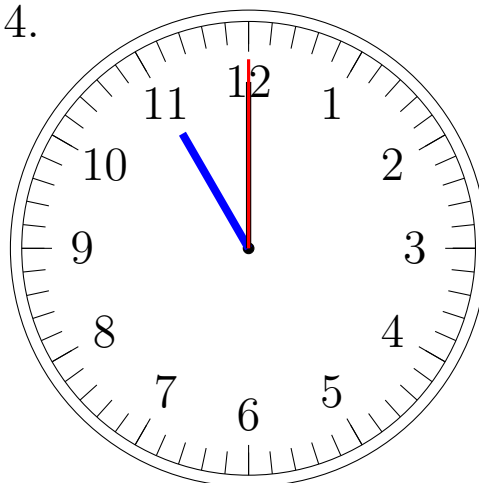
2:00:00

3.



9:00:00

4.

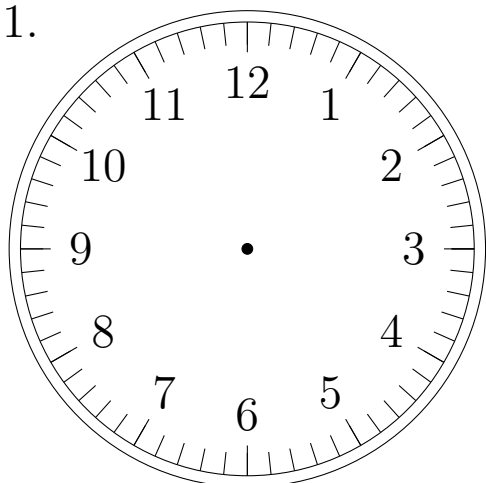


11:00:00

Place d'Aiguilles sur une Horloge Analogique (I)

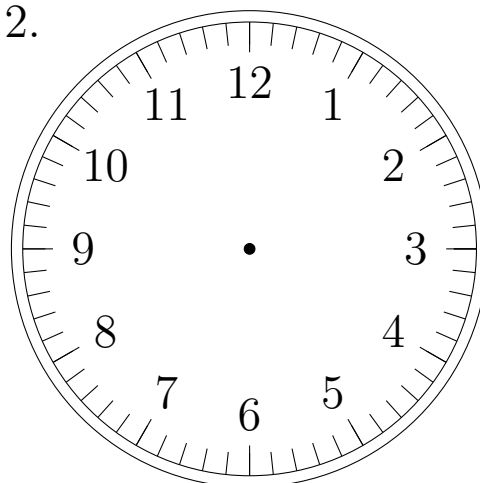
Placer les aiguilles de l'horloge pour qu'elles montrent le temps indiqué.

1.



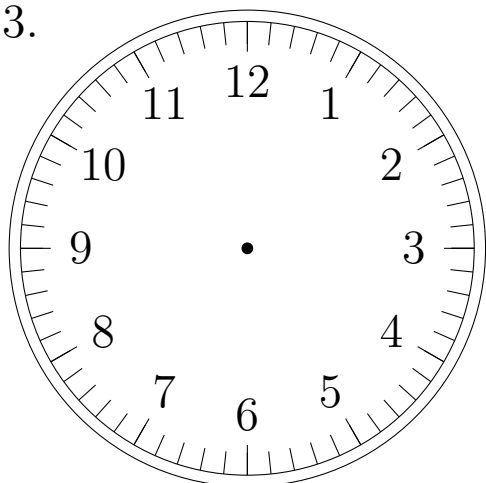
10:00:00

2.



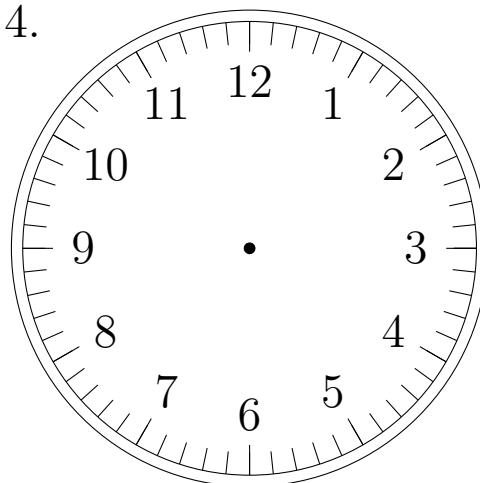
1:00:00

3.



9:00:00

4.

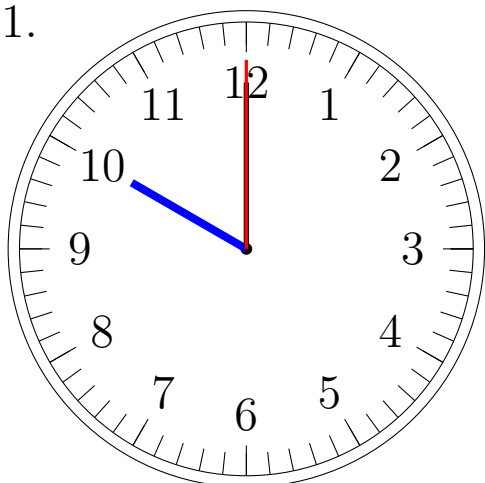


3:00:00

Place d'Aiguilles sur une Horloge Analogique (I) Solutions

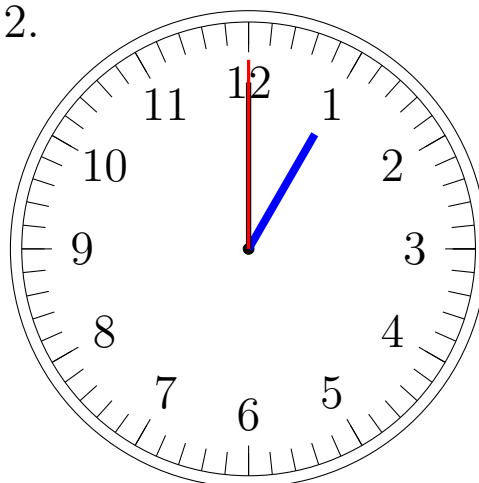
Placer les aiguilles de l'horloge pour qu'elles montrent le temps indiqué.

1.



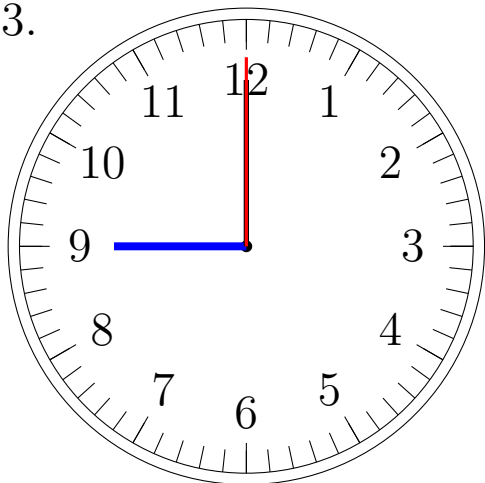
10:00:00

2.



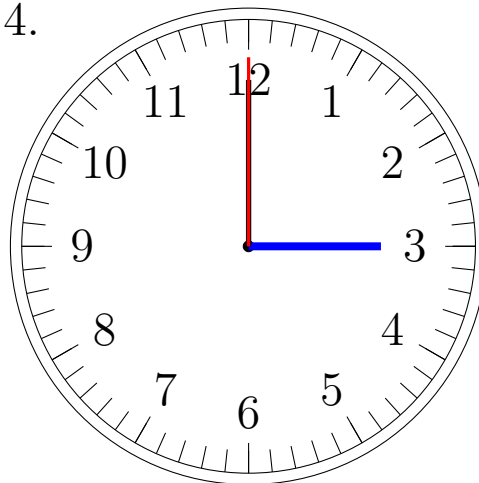
1:00:00

3.



9:00:00

4.

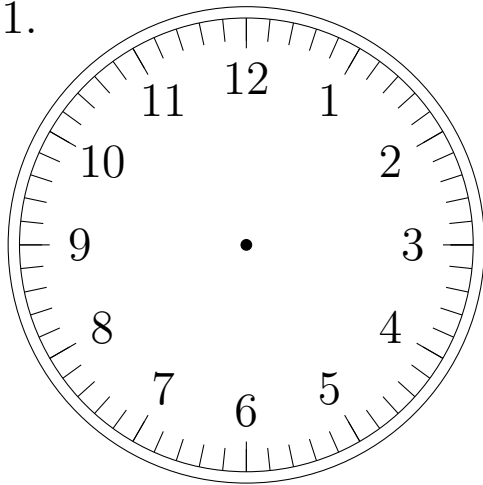


3:00:00

Place d'Aiguilles sur une Horloge Analogique (J)

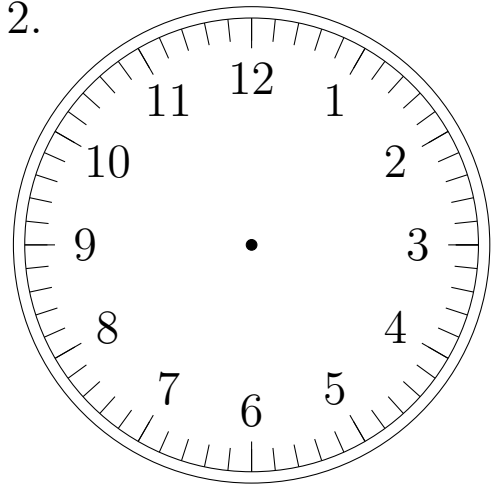
Placer les aiguilles de l'horloge pour qu'elles montrent le temps indiqué.

1.



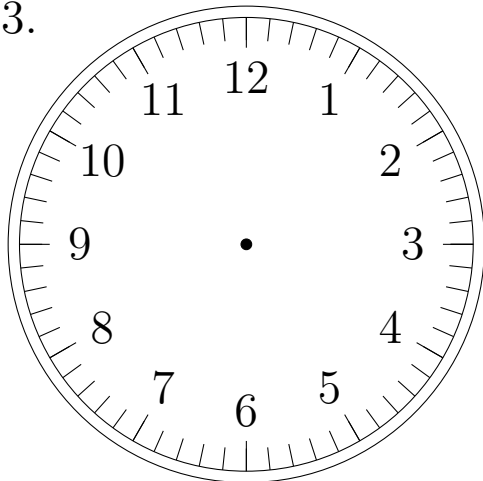
10:00:00

2.



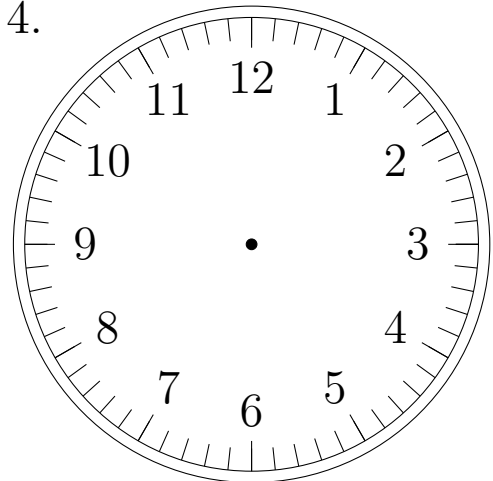
5:00:00

3.



12:00:00

4.

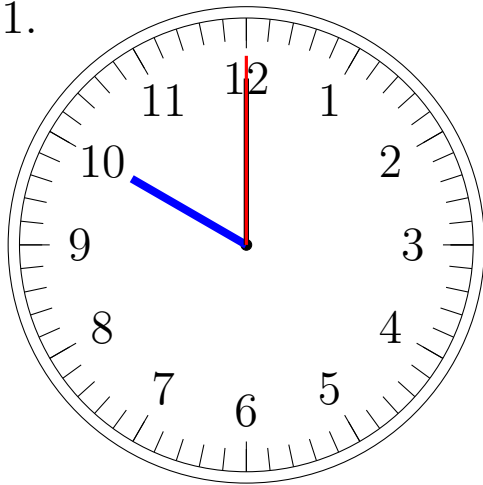


5:00:00

Place d'Aiguilles sur une Horloge Analogique (J) Solutions

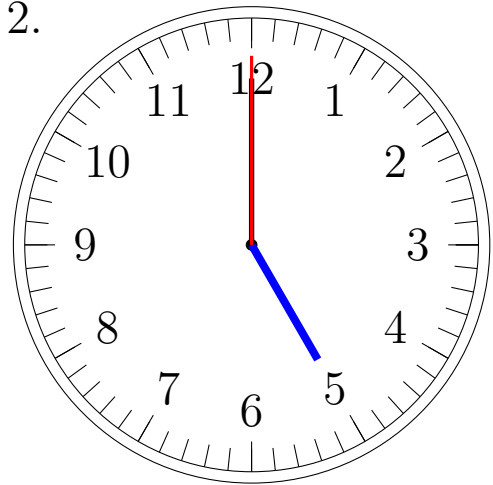
Placer les aiguilles de l'horloge pour qu'elles montrent le temps indiqué.

1.



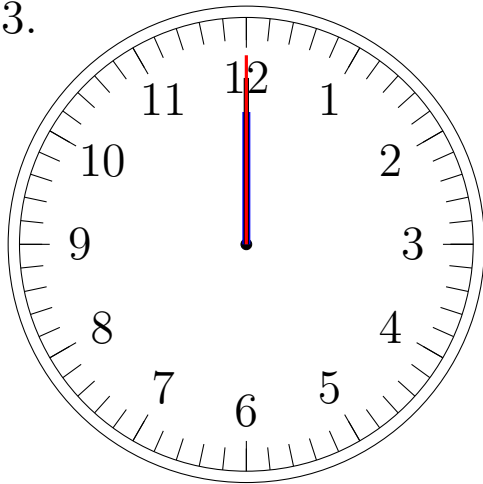
10:00:00

2.



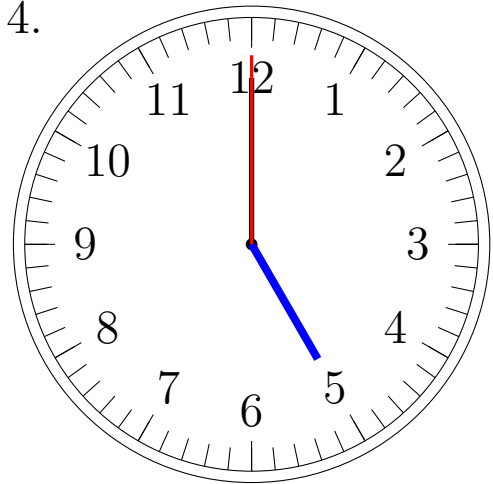
5:00:00

3.



12:00:00

4.



5:00:00